

PALLET TRUCKS WITH WEIGHT SYSTEM

**OPERATION INSTRUCTIONS
SPARE PARTS LIST**

FKV2300 / FKV3000



EC DECLARATION OF CONFORMITY

All information you need for the use and maintenance of your low loader can be found in this operating manual. Before switching on the car, read the owner's manual carefully and follow the instructions contained therein. They help you prevent accidents and maintain the warranty conditions and therefore their validity.

The pallet truck described in this manual is manufactured using the most modern technological processes. During construction, all applicable safety standards and regulations were observed.

VMH - Material Handling s.r.o. Sabinovská 53, 082 21 Veľký Šariš, SLOVAKIA



Tel.: 00421 51 7495160
Fax.: 00421 51 7495160
E-mail: vmh@vmh.sk
Web: www.vmh.sk



The declaration of conformity indicates that a forklift truck complies with the relevant directives at the time it is placed on the market:

- * CE: European Union (EU)
- * UKCA: United Kingdom of Great Britain (UK)

The Declaration of Conformity is issued for the EU and United Kingdom (UK) markets.

★ ★ ★ EC Declaration of Conformity ★ ★ ★	
to EC Machinery Directive: 2006/42/EC	
Producer: VMH–Material Handling s.r.o., Sabinovská 53, SK-082 21 Veľký Šariš, Slovakia Reg. Nr.: 45 452 237	
We, represented by the undersigned, here by declare that the following machinery:	
PALLET TRUCKS WITH WEIGHT SYSTEM	
FK2300 with capacity 2300 kg FK3000 with capacity 3000 kg (also, with additional components and derivations)	
conforms to the following relevant provisions / directives:	
EC Machinery Directive 2006/42/EC	
Further standards / specifications / documents used in the form of	
Harmonised Standards:	EN ISO 12100:2010 ES ISO 3691-5:2015+A1:2020
Veľký Šariš, Slovakia 19.01.2025	Vladimír Havrila

IMPORTANT:

Unauthorized interventions or changes to the structure of the pallet truck can lead to injuries and a general safety hazard in the workplace. Such an intervention in the structure will result in the declaration of conformity becoming invalid.

INSTRUCTIONS FOR ASSEMBLING THE PALLET TRUCK

ASSEMBLING THE CONTROL PART

- * Check that the piston is pushed to the lower position.
- * Insert the hydraulic piston (1) in an inclined position into the "head" of the structure (3). Rotate the plate (6) so that the holes are facing/pointing towards the arm (5). Hold the reins with your hands and feet, push the hydraulic system to slide the plate (6) over the arm (5).
- * Raise both slides so that the holes in the plate (6) are parallel to the holes in the arm (5).
- * Attach the plate (6) to the arm (5) using the plate pin (4).
- * Secure the plate pin (4) with a flexible pin (Ø 5mm) (7).

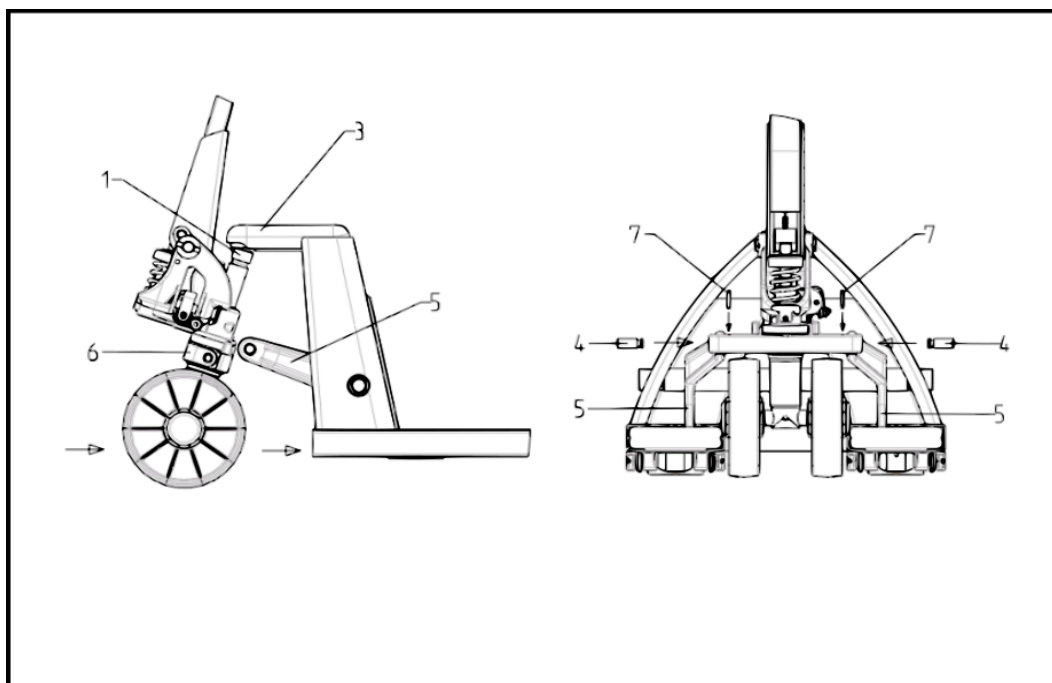
Tools: Hammer,

IMPORTANT:

Before starting, pump the hydraulic system several times (control lever up) to bleed the hydraulic system.

Accessory:

- 2x plate pin
- 2x flexible pin (Ø 5mm)



The department may not modify the instructions for use.

The descriptions and illustrations in the operating instructions and the spare parts list are not binding. For further development or for technical reasons, we reserve the right, at any time, to make any modifications we deem appropriate to the assembly sets, individual parts and accessories, whilst maintaining the essential characteristics of the type of stroller described below.

CONTENTS

Instructions for assembling the pallet truck	Page 1
Contents	Page 2
Description and drawing documentation	Page 3
Warning before commissioning	Page 3
Notice to user	Page 3
Load regulations	Page 3
Security settings	Page 4
Safety warnings	Page 4
Guarantee	Page 4
Termination of warranty	Page 4
Checking the oil level	Page 5
Adjustments	Page 5
Replacing the valve cartridge h 016	Page 5
Filling oil and ventilating	Page 5
Please note!	Page 5
Instructions on eliminating faults	Page 6
Basic usage information	Page 7
Arrangement and usage requirements	Page 7
Daily operating	Page 7
Reasons for potential incorrect weighting values	Page 7
Power supply	Page 8
Maintenance and storage	Page 8
Periodic inspection and accuracy testing	Page 8
Self-acting display test	Page 8
Kpz 52-19 indicator	Page 9
Indicator operation	Page 10
General functions	Page 11
Reference piece count function	Page 12
Target weight function	Page 13
Addition function	Page 14
Hold function	Page 16
Advanced features	Page 17
Error messages	Page 18
Accessories	Page 19
Assembly drawings	Page 20
Steering assembly, explosive drawing	Page 21
Steering assembly, parts (L 001 – L 020)	Page 22
Steering assembly, parts (L 021 – L 027)	Page 23
Chassis, explosive drawing	Page 24
Chassis, parts (F 001 – F 041)	Page 25
Hydraulics, explosive drawing	Page 26
Hydraulics, parts (H 001 – H 028)	Page 27
Wheel- and parking brake, explosive drawing	Page 28
Wheel- and parking brake, parts (B 001 – B 005)	Page 29

DESCRIPTION AND DRAWING DOCUMENTATION

WARNING BEFORE COMMISSIONING

The hand pallet truck is carefully inspected before it leaves the factory. To ensure that no damage has occurred during transport, check that the trolley is not damaged and that it is functional. Indicate the damage caused by the transport in the copy of the transport note. Submit damage reports to the freight forwarder within 48 hours. Damaged trucks must not be put into operation.

NOTICE TO USER

On the drawbar of the hand pallet truck there is a manual lever for raising and lowering the truck, which you can put in three positions:

- Raise – lever in the down position
- Drive position – lever in centre position
- Lower – lever in the upper position

When towing a hand pallet truck, put the hand lever in the neutral position. This makes it easier to move the drawbar and the pump area in the hydraulics is pressure-free. This saves hydraulic seals and individual parts of the valve. This will give you a longer lifespan.

The hand pallet truck is largely maintenance-free, but the oil level needs to be checked and topped up if necessary. Individual bearings and pins have long-term lubrication.

We recommend that you lubricate all lubrication points marked (→) in the user manual with a long-term lubricant in monthly cycles or with each thorough cleaning, depending on the use of the wheelchair.

LOAD REGULATIONS

The hand pallet truck is intended for the horizontal transport of heavy loads on a flat and reinforced surface.

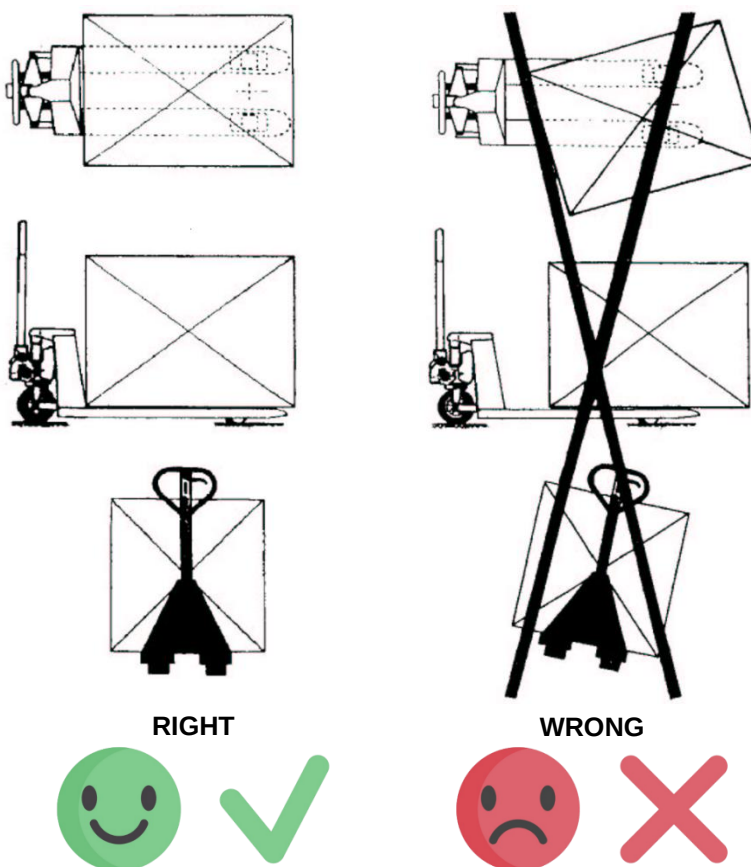
Transported goods must be evenly stored on pallets or similar containers.

The maximum permissible load is indicated on the type plate and sticker with the permissible load, which are located on the hand pallet truck.

If the skids are loaded on one side, there is a danger that the skids will deform or that the load will slip.

Do not under any circumstances lift or shift the load at the end of the skids, as you may damage the truck.

To protect the wheels and the steering part, make sure not to use the cart on a surface with large unevenness.



SECURITY SETTINGS

The hand pallet truck is equipped from the factory with a safety valve that is firmly set. This valve admits a maximum load of up to +5% of the rated load. The valve is secured with a safety screw so that the user cannot adjust it. In order to exclude the possibility of damage to the transported goods, it is necessary to pay attention to the even distribution of the load. If the load is unevenly distributed, the safety valve is ineffective.

When transporting goods on an inclined surface, it is necessary to ensure that the goods do not slip off the pallet truck, or one more person is required during handling. Therefore, it is necessary to use a hand pallet truck on an inclined surface up to approx. 6% only with service and parking brake.

Manipulation during an ascent or descent of more than 6% is fundamentally inadmissible. It is not possible to ensure safe transport by changing the center of gravity.

SAFETY WARNINGS

Transporting with high loads, e.g. machines, changes the centre of gravity of the load so unfavourably that the complete hand pallet truck including the load, goes out of control and may overturn on a curve. Loading, e.g. onto a truck or mobile loading ramps, should be regarded in particular as likely occasions for accidents. During such activities the hand pallet truck is to be secured with particular care.

Conveying persons or using the hand pallet truck as a form of roller skate is not permissible. Foodstuffs are only to be transported in packed form. Direct contact with the hand pallet truck is to be avoided.

The accident prevention regulations for industrial trucks and the safety regulations and accident prevention regulations applicable to the user are also to be complied with.

GUARANTEE

The guarantee includes material and assembly defects on parts which have proved to be incorrect or inadequate for normal use when tested by the manufacturer and which are returned to the manufacturer free of charge within the guaranteed period of 12 months.

The warranty does not apply to:

- Damage caused by failure to follow the instructions in the user manual.
- Damage caused by excessive or improper use.
- Damage if the user attempts to repair the wheelchair improperly or carries out unagreed repairs.
- Wear and tear.
- Mechanical damage.
- Damage caused by liquids or other substances.
- Using non-original accessories.

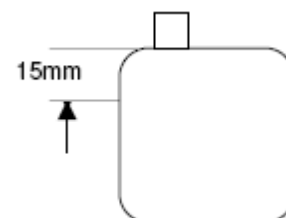
TERMINATION OF WARRANTY

The manufacturer does not accept warranty for damage to persons and objects caused by deficiencies and errors in the delivered low-lift truck or due to improper use of the truck. The manufacturer also assumes no liability for lost profits, downtime, losses or similar indirect losses incurred by the buyer. Compensation for damage to third parties, of any type, is excluded.

CHECKING THE OIL LEVEL

To be carried out at least once a year. Lower the hand pallet truck and tank cap H 024.

The oil in the oil reservoir must reach 15 mm the lower edge of the sealing opening when the hydraulics are lowered. Top up, if necessary.



Types of oil:	
According for DIN 51524 (German Industry Standards)	HLP 46: (Standard, corrosion-proof and wet storage versions)
	HV 15: (For use cold storage houses)
	HV 32: (Quick lift hydraulic and underground conveyor systems)

Raise and lower the hand pallet truck several times, then check the oil level again.

Screw on H 024 tank cap.

ADJUSTMENTS

Move the lowering lever into the drive position.

Screw in hexagon nut H 020 and setscrew H 019 until the lifting piston remains stationary despite pumping at the drawbar.

Tighten hexagon nut H 020. The setscrew H 019 must not turn at the same time.

REPLACING THE VALVE CARTRIDGE H 016

Pump up hand pallet truck to the half-way position. Lift frame out of lifting piston rod, fold steering mechanism forwards, move hand pallet truck into the side position. Remove dowel pin H 018 on the hydraulics, fold lowering lever H 017 to one side, unscrew valve cartridge H 016 until the thread is free; press out the valve cartridge with a short firm blow on the lifting piston H 001.

Assemble the hand pallet truck in the reverse sequence after cleaning or replacing the valve cartridge.

FILLING OIL AND VENTILATING

When refilling the oil, make sure to bleed the hydraulics afterwards.

1. To ventilate the hydraulic, remove piston
2. Pour the oil (220 ml)
3. Insert piston again
4. Close tank and press piston down
5. Open tank again and pump until the piston is at half height
6. Repeat the procedure from point 4 again

PLEASE NOTE!

The following data must always be specified to ensure correct processing of your spare parts order:

- a) Truck type (load capacity)
- b) Series-No. of the truck
- c) Order No. of the spare part

Instructions on eliminating faults			
Term	Fault	Cause	Remedy
1	Lifting piston only extends partially	Shortage foil	Refer to page 5 for checking oil level, top up oil
2	Lifting piston does not extend under load	Shortage of oil Adjust valve cartridge H 016 again Valve cartridge H 016 contaminated	Refer to item 1 Refer to Adjustment Instructions, page 5 Clean or replace valve cartridge
3	Hand pallet truck lowers under load	Valve cartridge H 016 contaminated Valve cartridge H 016 defective Lip seal H 003 defective	Refer to item 2 Replace control valve H 016 Replace lip seal
4	Lifting piston falls back into the limit position with every pump stroke	Valve cartridge H 016 does not operate Valve cartridge H 016 contaminated or defective	Check setting, refer to page 5 Refer to item 3
5	Specified load is not reached	Pressure-limiting valve H 015 defective	Replace pressure-limiting valve
6	Hand pallet truck does not lower	Valve cartridge H 016 blocked Chassis mechanism locked up	Check and make functional lowering mechanism from handle lowering linkage to control valve H 016. Remove foreign bodies, make functional
7	Hand pallet truck can be lowered too quickly or too slowly	Valve cartridge H 016 contaminated Choke ring defective	Clean control valve H 016 Replace control valve
8	Empty pumping of hydraulics	Air in hydraulic system	See Page 5. Fill oil and ventilate. Point 5 – 6.
9	Leakage at lifting piston	Wiper defective	Replace wiper H 002, ensure there are no foreign bodies in the sealing grooves. Only install lifting piston if surface is without defects
10	Leakage at pump piston	Wiper defective	Replace wiper H 005 and lip seal H 006. When installing, check piston is not damaged.

BASIC USAGE INFORMATION

Hand pallet weighter should be used mainly for measurement reasons. As a non automatic measurement device, is providing the values of weighted items. It can be used on the smooth and flat surface. The goods are weighted on the pallet. Centre of gravity should be placed in the middle. After reaching the stable weighting value the weight can be readed.

Load cells and scale can be damaged because of the influence of strong plunk, overloadings or point overloading. It is not recommended to leave out constant the goods on the Hand pallet. Please avoid transporting the hand pallet truck with any goods on it or working under extreme conditions.

Through load capacity we understand equally placed weight not point overloading. The scale can not be used for any dynamic weighting. Any sudden change on the scale example: fill or empty the liquid from the container through filter compensation can give false value.

Any construction changes (extensions) are not aloud.

ARRANGEMENT AND USAGE REQUIREMENTS

To obtain the most accurate weighted value, the scale should set up only in places which pass the following conditions:

- Surface must be flat and vertical. Slope can not be bigger than 2°.
- Surface must be stable and not exposed for vibrations.
- Do not expose for long effect of sun.
- Do not use it in places where corrosion gases can be found.
- Free of dust environment.
- Temperature environment from -10°C to 40°C.
- Average moistness of air from 40 to 70% (Do not use near the atomizing humidifier!)
- Do not use near other electronic devices, because it can course inference.
- Do not use near the heating devices and outlet air-conditioning equipment, to not exposure the device for big and quick temperature fluctuation.
- Do not expose the scale to sudden changes in temperature.
- The maximum capacity of the scale must not be exceeded.

To maintain correct weighing in the long term, it is not recommended to leave the scale permanently loaded (e.g. overnight), this may have a negative effect on further use of the scale.

DAILY OPERATING

Before using, please check the device for its working condition, is it ready for handling and free of visible damages, specifically on wheels and forks.

Please check the battery and follow electronic and charger guidelines.

While handling the device not a lot of effort should required. However, if noticing any doubts would occurred, please contact the manufacturer or dedicated dealer.

It is recommended to begin weighting after 10 minutes from the switching on the device.

REASONS FOR POTENTIAL INCORRECT WEIGHTING VALUES

The scale can show an incorrect weighting values when:

- Under the scale or between the forks is an item or some contamination.
- After switching on, during functional test the scale is/ or will be loaded.
- Weighting goods are placed just right next to the control panel box, on the ground or lean on other subjects.
- Incorrect charging.
- If the forks are not freely movable before weighing.
- Cable connection is break down between control panel and load cells.

POWER SUPPLY

Scale on the hand pallet is delivered with the charger. Delivered charger supply the energy to built-in accumulator.

Charging: Protect the hand pallet from moving. When the display is turned off you may proceed and connect the charger to on-site power supply (230V), other end plug in to the socket located in the front of the device. When the charger cable is unplugged, the diode is showing **CHARGE**.

Green – accumulator charge up to 75%
Red – charging is still in process

If the LED is green, the charging process switches to trickle mode.

NOTICE!

After completing the charging process then automatically turn into safe mode. For full charging effect, it should be proceeded for 18 hours. Charger must be disconnected before activating the hand pallet.

Charger: Always use original charging device. The use of any other device may cause considerable damage to the electronics.

Charger should be checked before using for any damages. If the charging device is damaged by accident or if any other defect exists, please check the output. If the output is affected in any way, immediately order a new charging device. Any damage to the charging device/power pack may result in a reduction or failure of the unit, resulting in most cases damage to the scale.

Accumulator: It is recommended to charge the accumulator every day over night. This way will be guaranteed correct charge level indicator through the day. Charging system with limited voltage strain protects from overcharging the accumulator. Low voltage strain information appears on the display. Accumulator must be charged straight away. If charging level is too low, scale is switching it self automatically off or it is impossible to switch it back on.

MAINTENANCE AND STORAGE

For better maintenance never use strong care products no strong detergents should be used (solvents etc.) Scale should be carried by soft and damp cloth and/or soft detergents. No fluids can enter inside of the scale.

Accumulator should be fully charged. It should be checked is there no load on the scale. After finishing work the scale should be cleaned and stored in dry and free of dust environment. From time to time accumulator should be charge, because its is discharging while storage.

PERIODIC INSPECTION AND ACCURACY TESTING

Routine technical inspection should be carried for its work and safety only by qualified staff.

Part Exchange of the equipment should be made by manufacturer or its authorized dealer. Original elements only should be applied.

It is highly recommended to proceed with routine technical inspections using only legal weight. It is recommended to proceed an independent inspection. Manufacturer recommends to carry technical inspection at least once a year.

SELF-ACTING DISPLAY TEST

After switch on the scale, automatically will begin self-acting display test. Visible counting from 99999 to 000000.

Please pay attention to all signs and symbols on the display which are showing up on full screen, to avoid receiving an incorrect values. After displaying zero the scale is ready to use.

If scale is not showing „0“ then please press →0← to resetting the scale.

KPZ 52-19 INDICATOR

The KPZ 52-19 indicator is a 6-digit, 30 mm high LCD display with backlight and five control keys.

Display

Function:

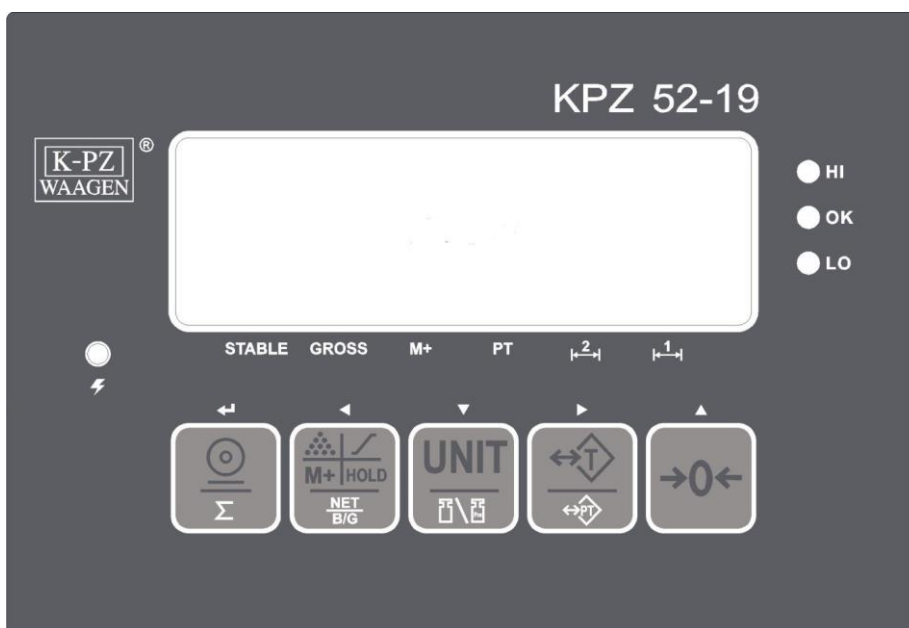
100% tare (multiple tare possible), manual tare, zero setting, minus display, total, reference piece counting, limit value.

Indicator:

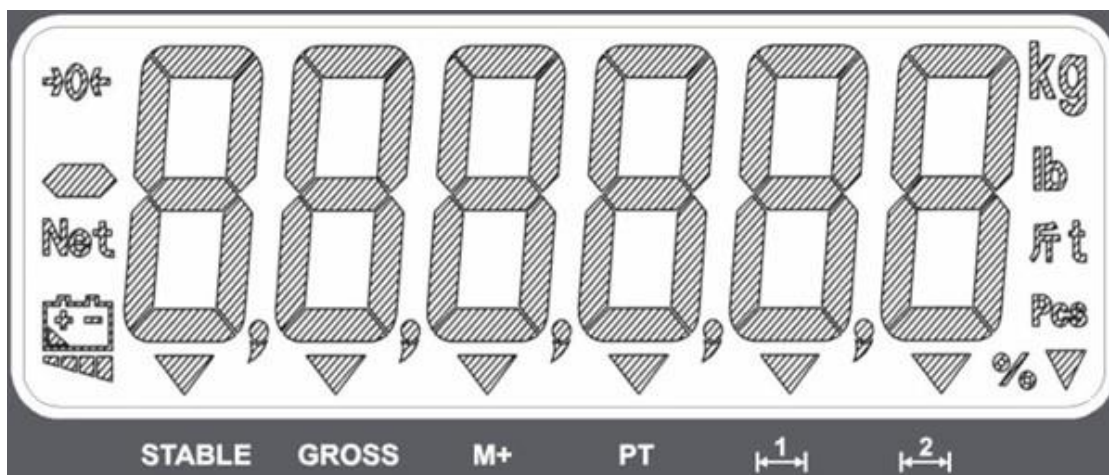
Tare, zero setting, stability, charge status, total, limit value via color LED, LOW-Bat display.

Power supply:

Rechargeable battery, operating time approx. 60 hours, 230V AC charger, battery status display.



LCD Screen



Symbols:	Description:
→0←	Zero indication
Net	Net weight indication
	Low battery indication
STABLE	Stable indication
GROSS	Gross weight indication
M+	Accumulation mode indication
PT	Pretare indication
←1→	Range indication (for multirange)
kg	kg unit
Pcs	peace unit, counting mode

Set point indication: **HI** – High limit value (2nd Value)
OK – Ok Value / Between HIGH and LOW (2nd and 1st Value)
LO – Low limit value (1st Value)

INDICATOR OPERATION

Keypad



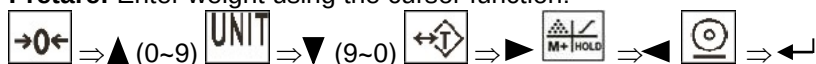
Key:	Function:	Hold for 1 sec.
	Printout / data output (Option)	Communication settings
	Totalizing	
	Modus selection / Function	/
	Switching between net and gross weight (net mode)	
UNIT	switching units	/
	Switch between weight / unit weight (piece counting mode)	
	Tare	1. Backlight 2. Switch on zero setting 3. Gravitation value
	Pretare	
	Zero	battery voltage
ON/OFF	Switch on the front housing.	On / Off switching

Zero setting: If the scale does not show 0.0 with no load, the display indication will be set to zero by pressing the button. This is up to 2% of the Max capacity possible.

Tare: Should the scale only display the weight of contents of a container, place an empty container on the scale and press the button. Now the displays indicate 0.0. **NET** symbol appears on the display. After filling the contents only, the ingredients are displayed. Multitare is possible. Partial Tara removal is possible.

Clear Tare value: Remove all weight from the platform and press the button. On the display the symbol **▼GROSS** (gross) appears.

Pretare: Enter weight using the cursor function:



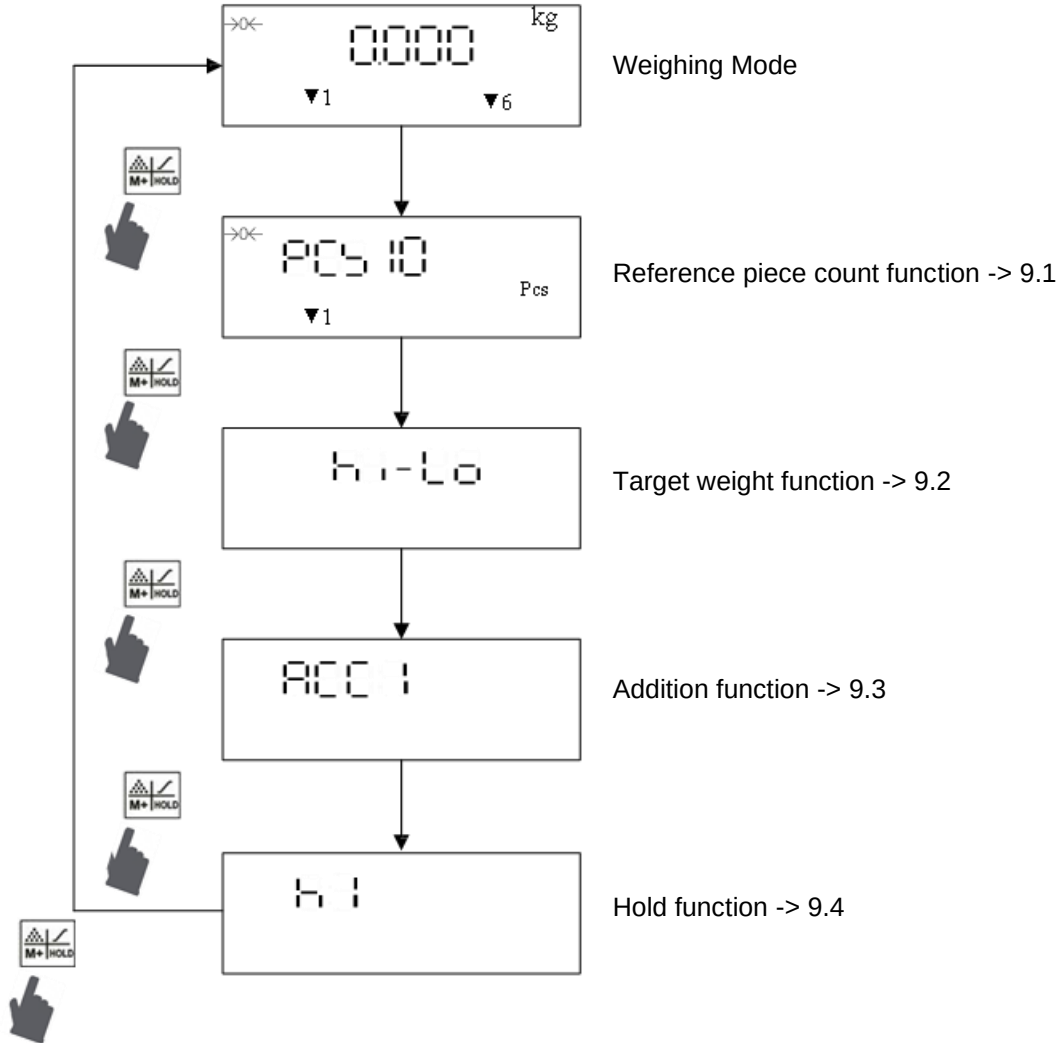
Function: Switching between the operating mode: Weighing, piece counting reference mode, target weight mode, addition mode, hold mode (see section 9).

Gross/Net switching: To indicate the combined weight of the container and the content, press the button. Now the symbol **▼GROSS** (gross) is displayed and the total weight is displayed. Press the button again and the weight of the contents and the **NET** symbol appears on the display again.

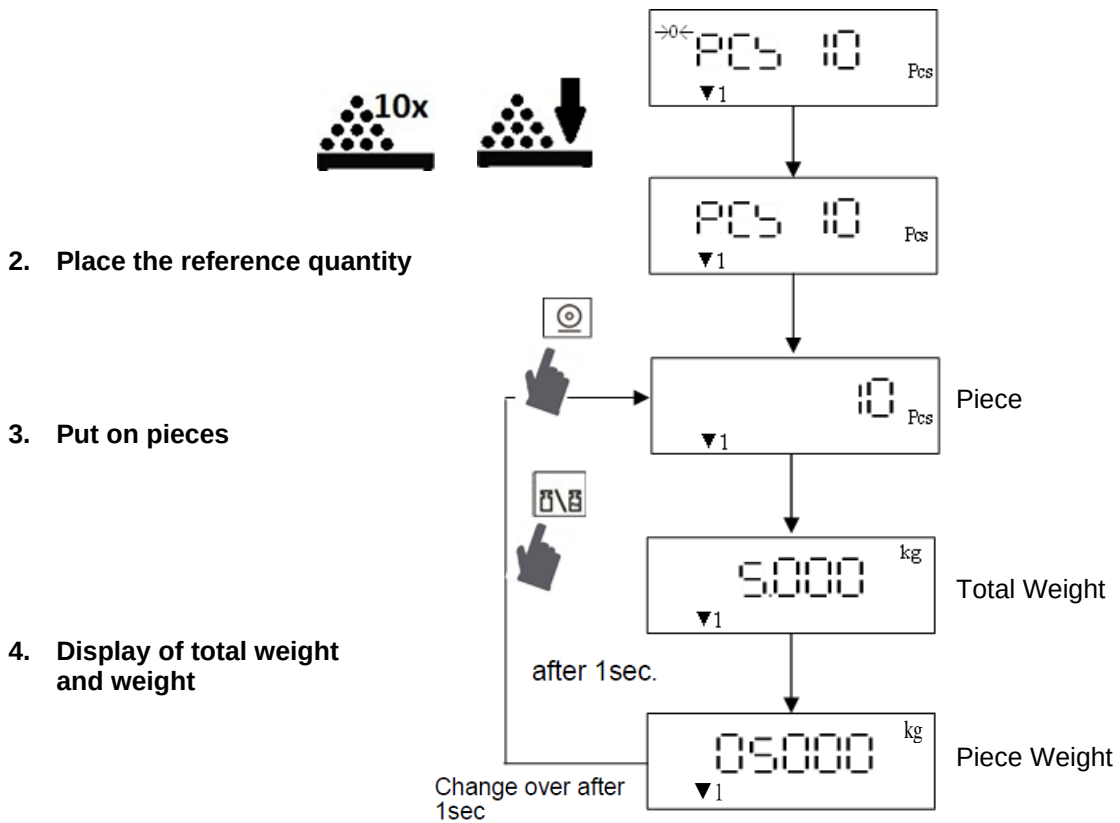
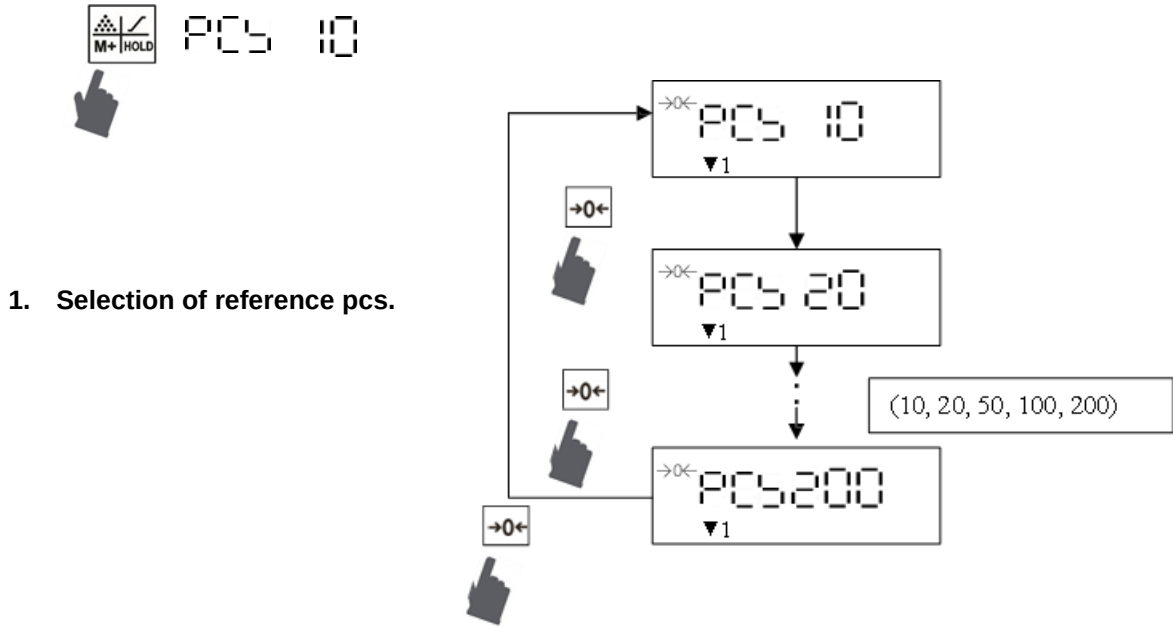
UNIT: Option. Not in use.

Printout/Data output: Press this key to send out the data on the interface (option) connector or to print it out. The weight value will be accumulated to the addition memory. The symbol **▼M+** is shown in the display.

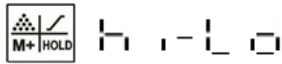
GENERAL FUNCTIONS



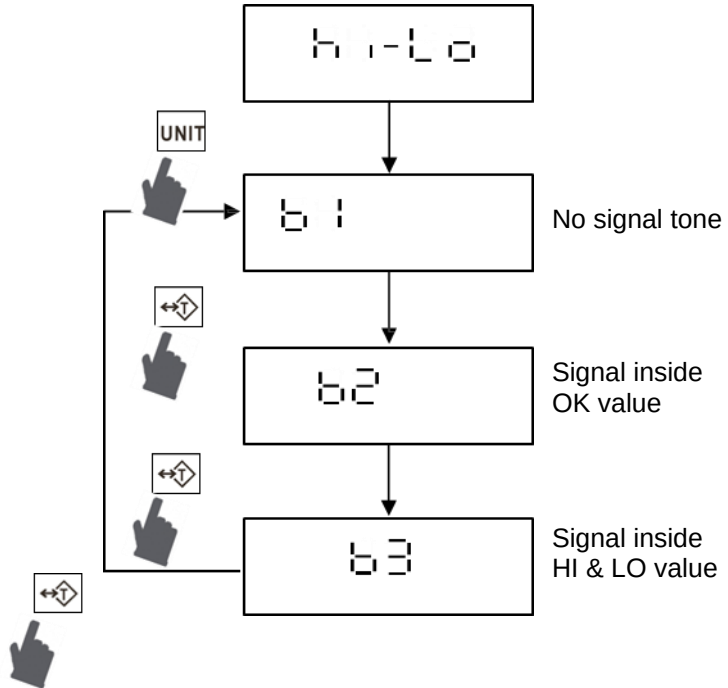
REFERENCE PIECE COUNT FUNCTION



TARGET WEIGHT FUNCTION



1. Select the signal tone

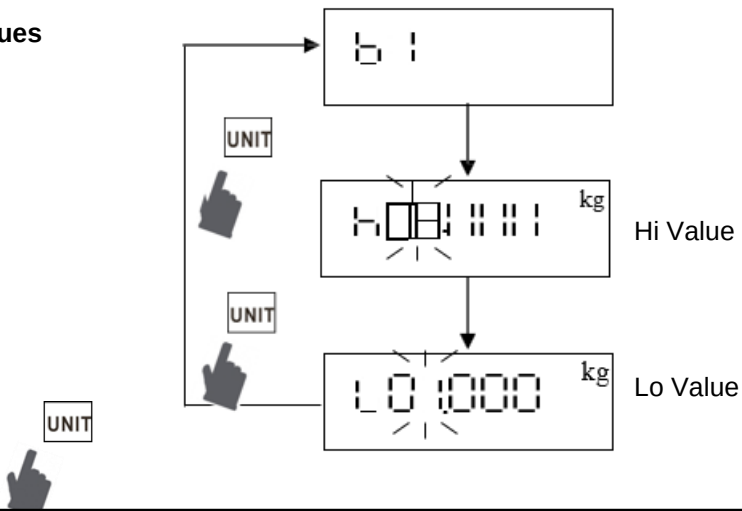


2. Enter the desired values

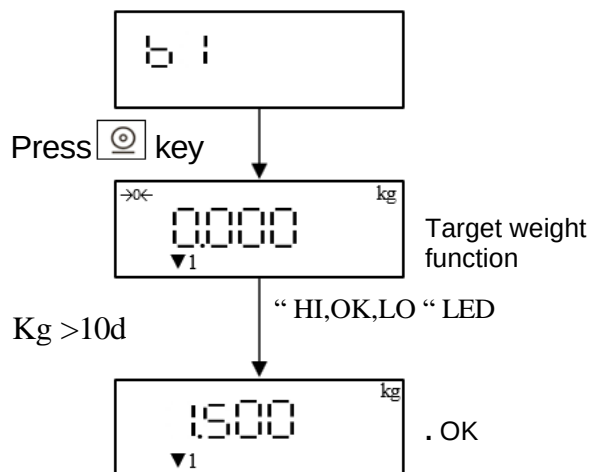
- ⇒
- ⇒ (0~9)
- ⇒

(Hi = 3.000kg)

(Lo = 1.000kg)

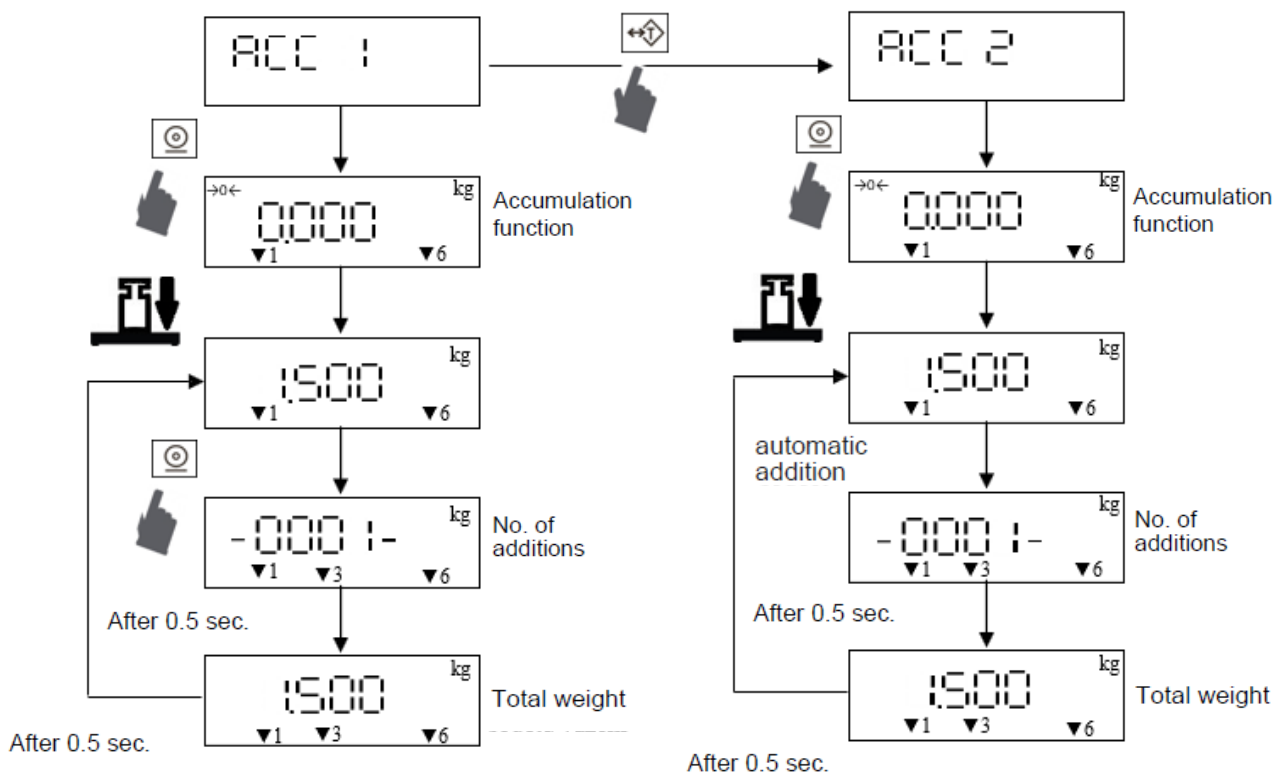


Apply your settings start and function.



ADDITION FUNCTION

1. ACC 1 & ACC 2



Manual Addition: After stability press the key. The symbol "M +" appears. The number of additions and the total weight is displayed for 0.5 seconds. A new addition is possible after the weight returns to zero.

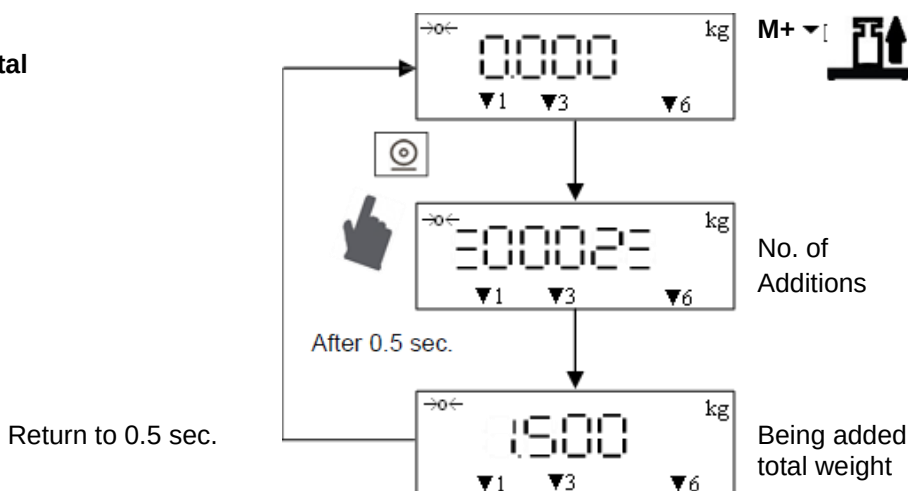
ACC 1 ⇒

Automatic Addition: After stability automatic addition is executed. The symbol "M +" appears. The number of additions and the total weight is displayed for 0.5 seconds. A new addition is possible after the weight returns to zero.

ACC 2 ⇒

The Addition is printed in the rnp3, rnp4 or rnp5 print format. The smallest possible addition weight is >10 division steps

2. Subtotal



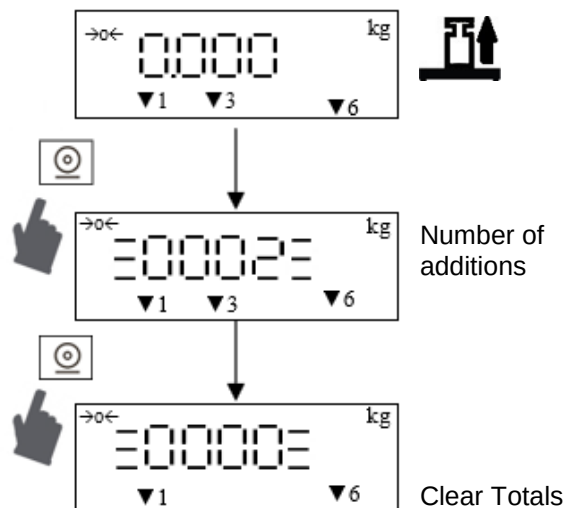
3. Delete addition



The total weight is printed in rnp3, rnp4 or rnp5 print format.



Press Key for 2 seconds. 3 times beep signal sounds.
The accumulation data is cleared and RS-232 does not output MC printing format. "M+" icon goes off.



HOLD FUNCTION

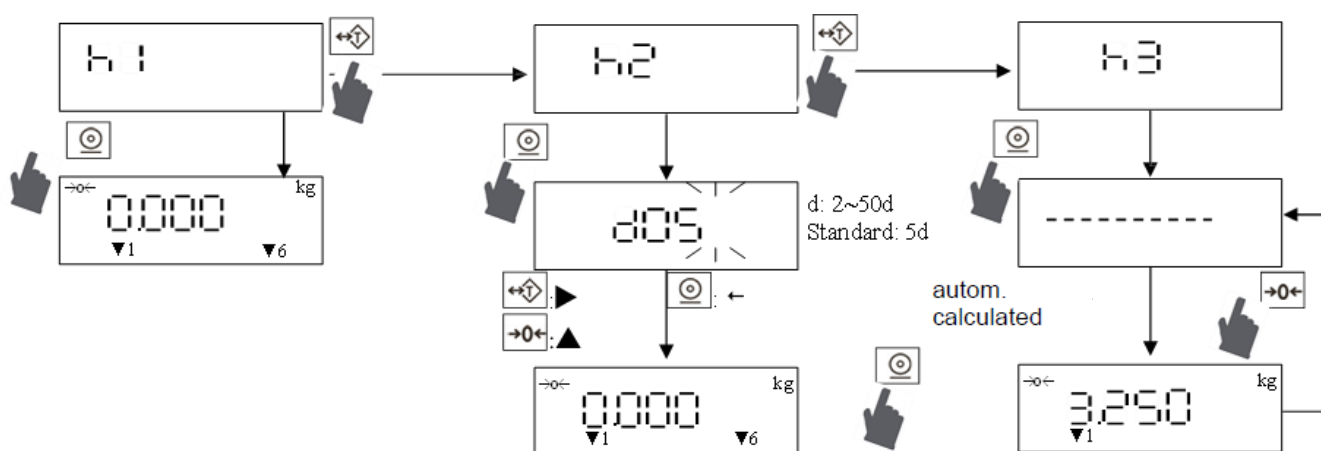
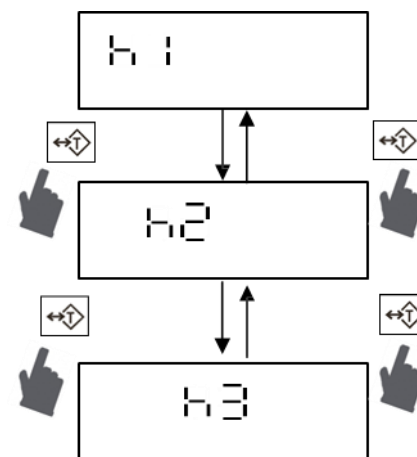
1. h1 h2 h3

h1 ⇒ Hold function is disabled after the load is taken off and the display **0 kg** displays.

h2 ⇒ Hold function is disabled when weight is above / below the selected tolerance of the division **d**.

h3 ⇒ Calculation of the average weight. Press the key to recalculate.

Beep sounds when hold state is reached.

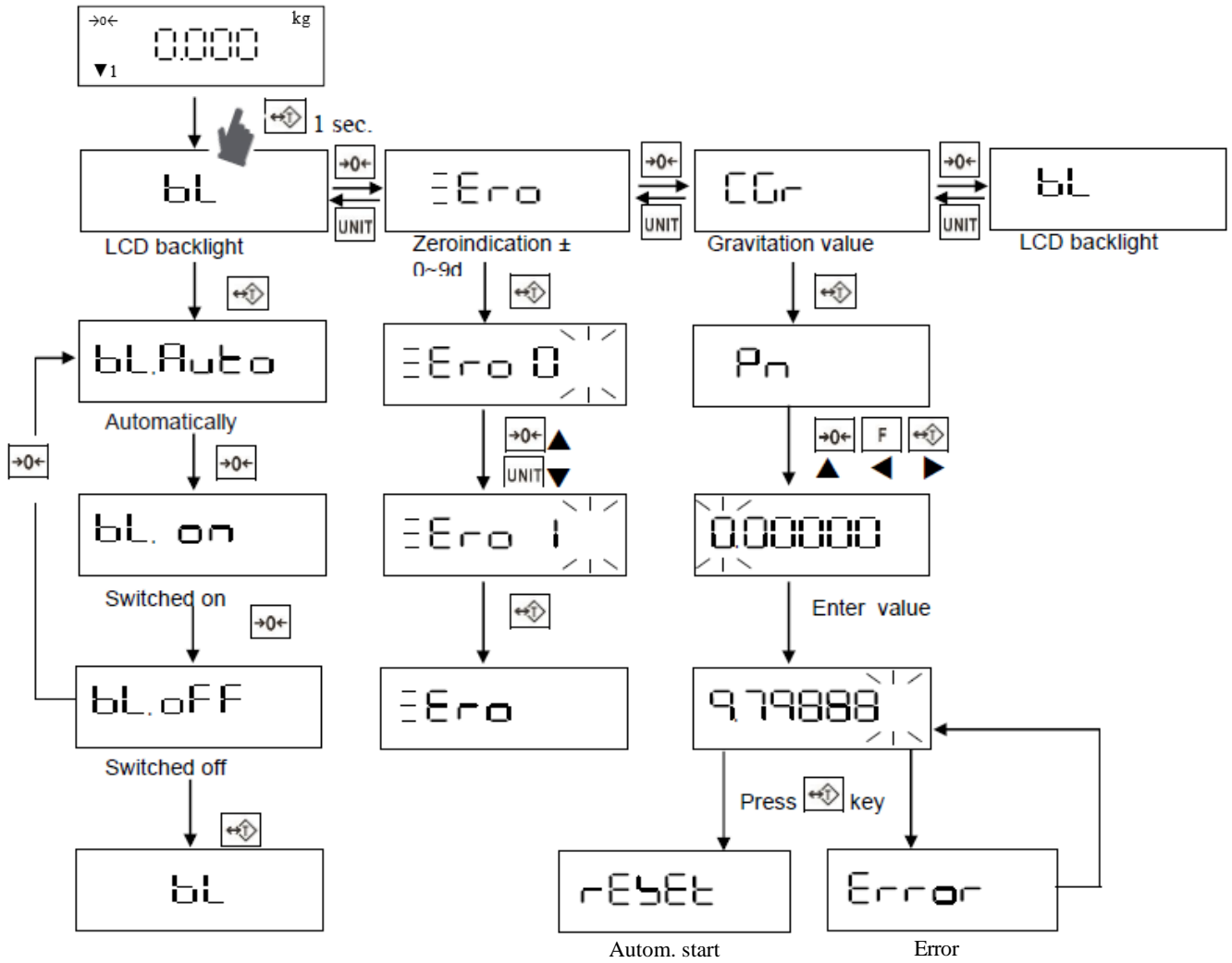


ADVANCED FEATURES

Backlight / Zero / Gravity value

for 1 sec.

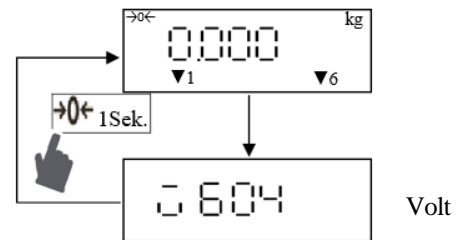
	= save		⇒ ▲ (0~9)	UNIT	⇒ ▼ (9~0)
	= abort		⇒ ►	F	⇒ ◀



Battery voltage

For 1 sec.

Autom. return to the weighing mode after 3 seconds.



Error messages		
Message	Error	Caused
E0	System error	Contact service
E1	Zero range is higher than 10% of maximum capacity while switching on the scale	Scale is loaded while turning on, problem with plugging in, load cell is damaged
E2	Zero range is lower than 10% of maximum capacity while switching on the scale	Scale is incorrect sets up, load receptor is not loaded, problem with turning on, load cell is damaged
E4	Zero value is not stable while switching on the scale	Environment influence, problem with turning on, load cell is damaged
oF	Measuring signal out of range	Overload, wrong connection, faulty load cell
oL	Overload	Too much load on the scale
-oL	Insufficient preload	The preload is smaller than -1/6 of Max capacity

ACCESSORIES

Built-in thermal printer		
Fig. No.:	Designation	Front view
1	Tear-off hole/bar	
2	Status LED (INDEX)	
3	Button to open the paper roll compartment	
4	Shift button (FEED)	
5	Paper roll compartment cover	
6	Sensor	
LED		Designation
LED is on	Printer on	
LED is off	Printer off	
Short flashing	Missing paper	
Long flashing	Error (print head overheated, power problem)	
Funktion		
Shift button (FEED)	After pressing this button, the printout will be shifted.	

Built-in thermal printer			
Replacing the paper roll			
<p>(a). Press the button to open the paper roll compartment.</p>	<p>(b). Unroll the roll slightly (place the end of the roll back and up) and insert as shown.</p>	<p>(c). Close the printer until the cover clicks into place at the corners.</p>	<p>(d). Remove unnecessary paper using the tear-off strip.</p>
<p>Notice!</p>	<p>If the green LED is on, the printer is ready for use.</p>		

ASSEMBLY DRAWINGS:

Model: **Weight:**
 FKV 2300 80 kg
 FKV 3000 80 kg

Fork length: 810 mm, 910 mm, 1000 mm, 1150 mm, 1220 mm, 1500 mm, 1800 mm, 2000 mm, 2300 mm and special lengths.

Fig.-No. L 001 – L 027 : Steering assembly

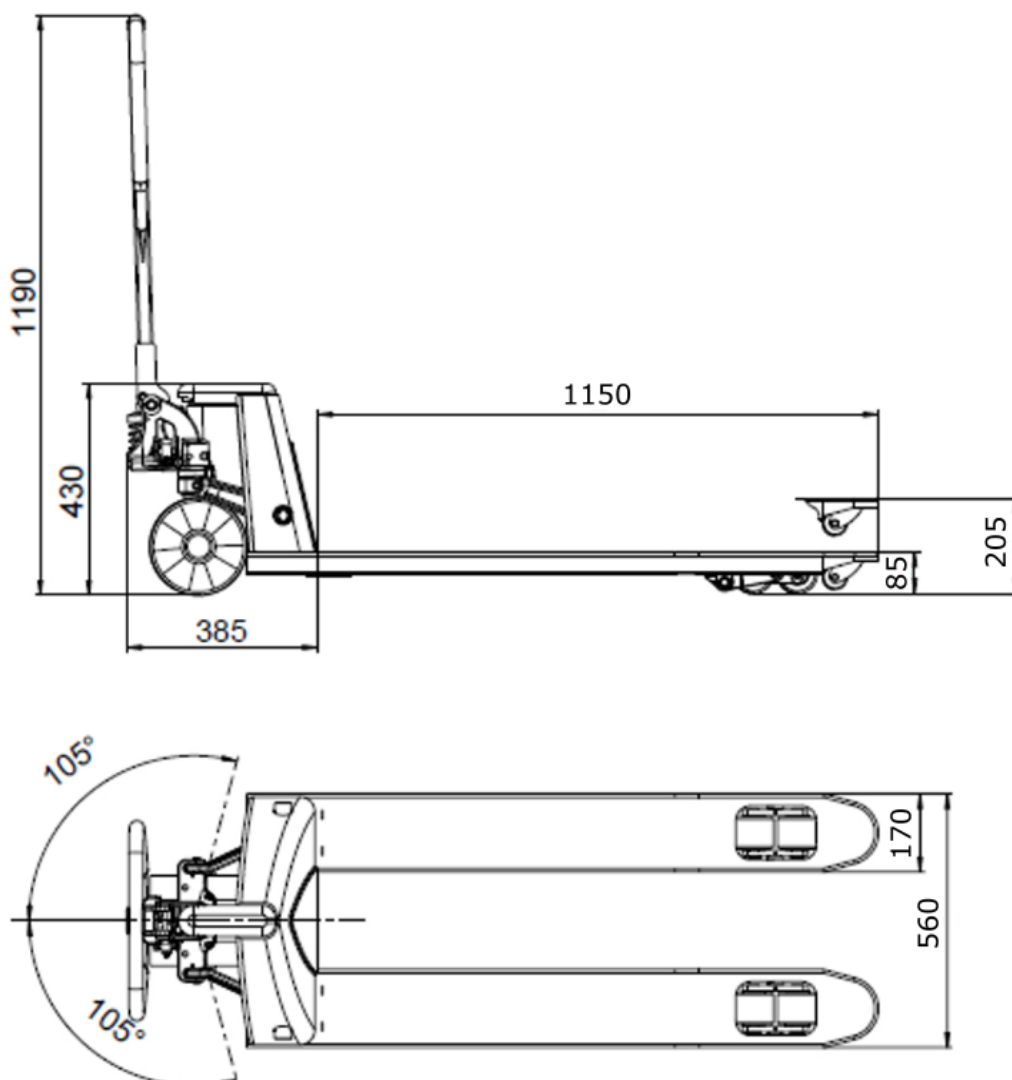
Fig.-No. F 001 – F 041 : Chassis

Fig.-No. H 001 – H 028 : Hydraulics

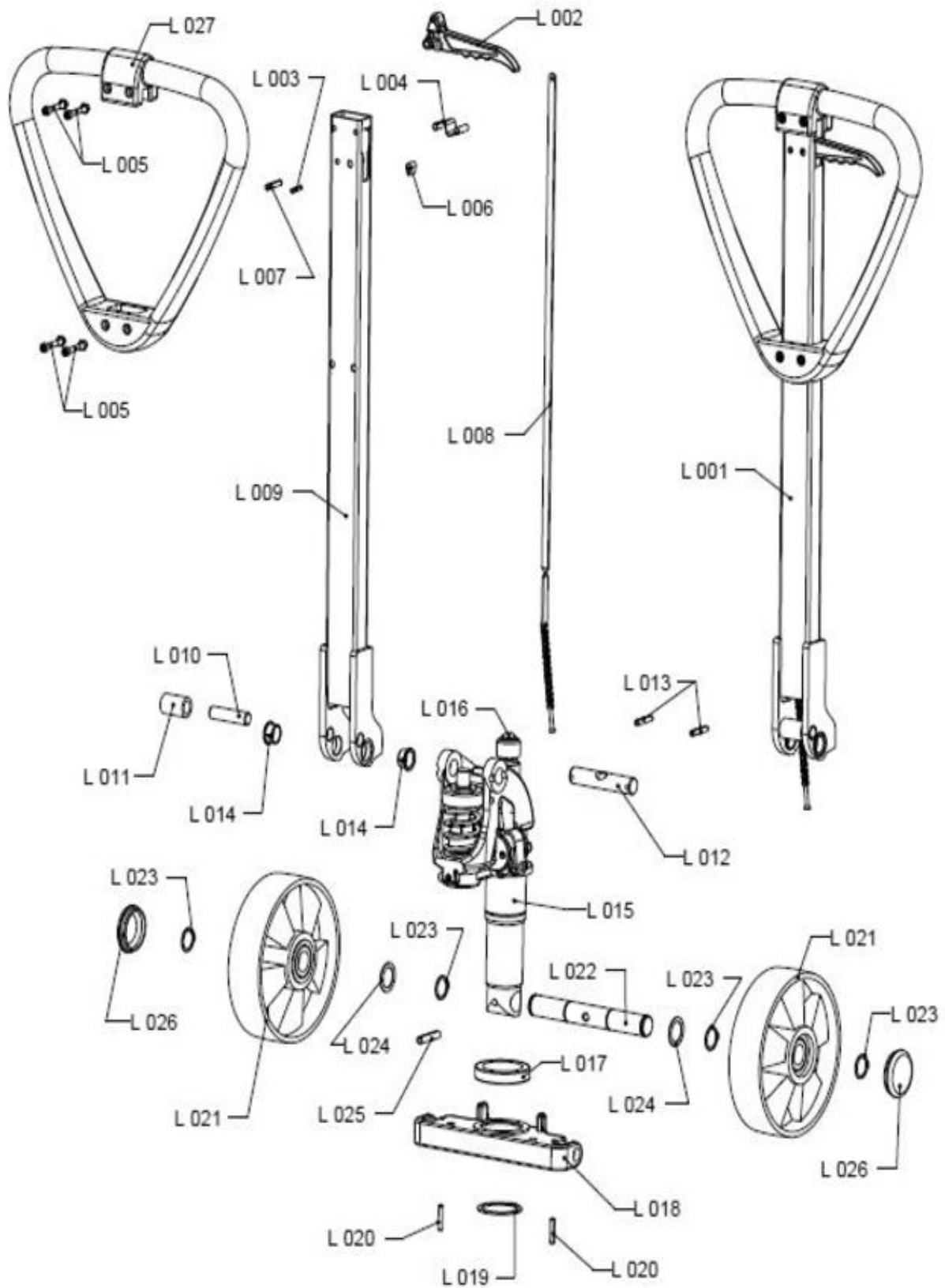
Fig.-No. B 001 – B 005 : Wheel- and parking brake

Please attention label with the following details:

- serial number
- year of construction
- weight
- weight capacity



STEERING ASSEMBLY, EXPLOSIVE DRAWING

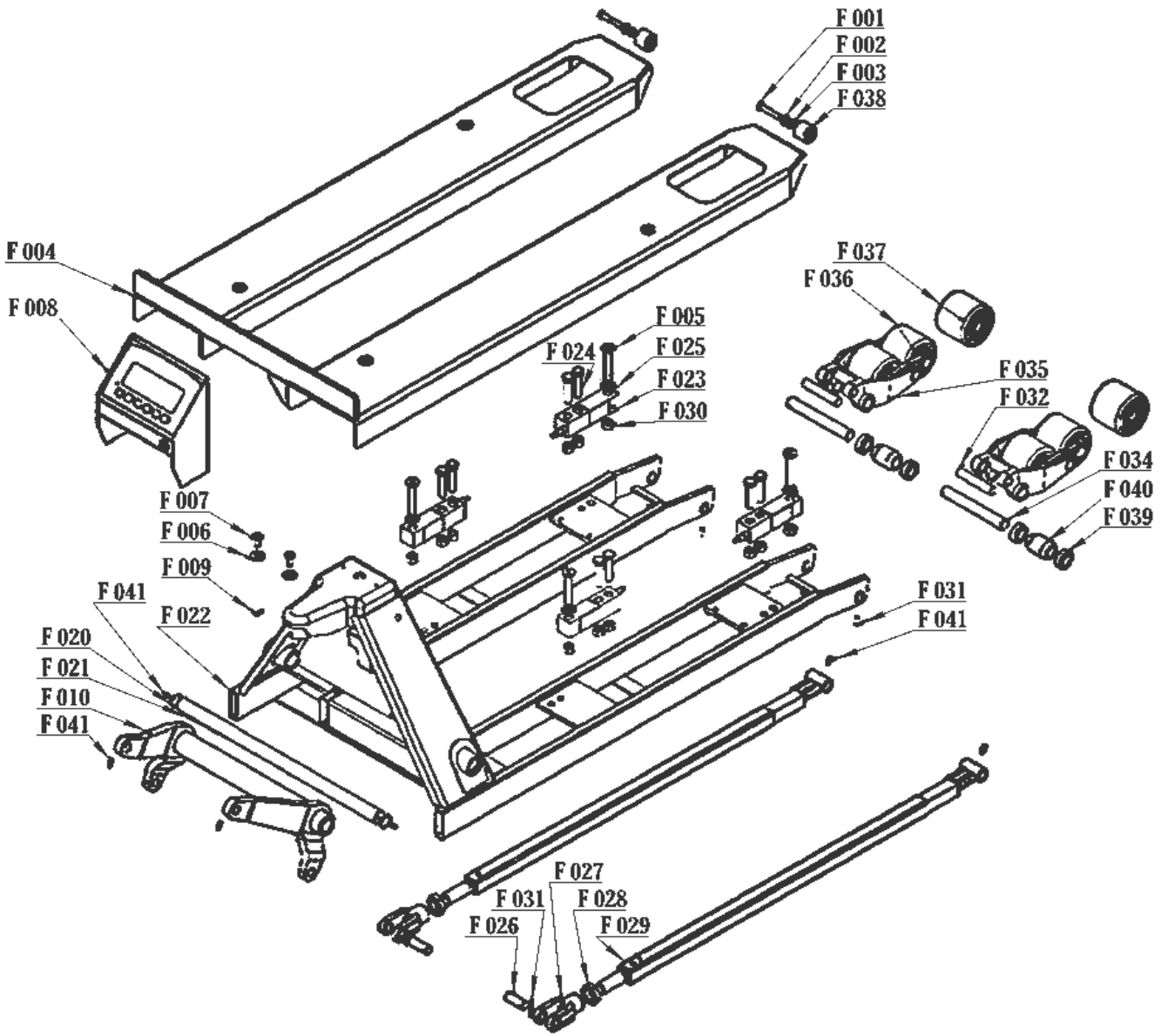


Steering assembly:

Fig. No.:	Order No.:	Designation:
L 001	G 63 000 031	Tiller handle, complete
	G 63 100 031	Tiller handle, complete, corrosion-protected
L 002	G 23 000 100	Lowering lever, complete
L 003	G 13 000 995	Tension pin-handle
	G 13 100 995	Tension pin-handle, corrosion-protected
L 004	G 63 000 183	Spring for lowering lever
L 005	G 63 000 182	Bolt and nut
	G 63 100 182	Bolt nut, corrosion-protected
L 006	G 11 000 185	Stip-Rubber
L 007	G 13 000 996	Tension pin – lowering linkage
	G 13 100 996	Tension pin – lowering linkage, corrosion-protected
L 008	G 63 000 170	Lowering linkage
	G 63 100 170	Lowering linkage, corrosion-protected
	G 63 200 170	Lowering linkage, stainless steel
L 009	G 63 000 131	Tiller body
	G 63 100 131	Tiller body, corrosion-protected
L 010	G 13 000 280	Pulley pin
	G 13 100 280	Pulley pin, corrosion-protected
L 011	G 13 000 290	Pulley
	G 13 100 290	Pulley, corrosion-protected
L 012	G 23 000 180	Pivot pin
	G 23 100 180	Pivot pin, corrosion protected
L 013	G 11 000 992	Tension pin – Pivot pin
	G 11 100 992	Tension pin – Pivot pin, corrosion-protected
L 014	G 33 000 178	Bush
L 015	G 63 020 220	Hydraulic – unit complete, 2,3 t
	G 63 020 230	Hydraulic – unit complete, 3,0 t
	G 63 028 220	Hydraulic – unit complete, quick lift
L 016	G 13 010 880	Ball for lifting piston
L 017	G 13 000 240	Deep groove ball thrust bearing
	G 13 100 240	Deep groove ball thrust bearing, corrosion-protected
L 018	G 63 000 255	Pressure plate for device with 520 mm
L 019	G 13 000 981	Circlip ring – hydraulic shank
	G 13 100 981	Circlip ring – hydraulic shank, corrosion-protected
L 020	G 11 000 991	Tension pin for pressure plate
	G 11 100 991	Tension pin for pressure plate, corrosion-protected

Steering assembly:		
Fig. No.:	Order No.:	Designation:
L 021	G 11 000 500	Steer wheel rubber, 2,3 t
	G 13 100 360	Steer wheel rubber, 2,3 t, splash-proof bearings
	G 13 000 425	Steer wheel rubber, 2,3 t, anti-static
	G 11 000 428	Steer wheel rubber, 2,3 t, wear-resistant
	G 11 000 380	Steer wheel vulkollan, 2,3 t / 3,0 t
	G 11 000 415	Steer wheel polyurethane with steel core, 2,3 t / 3,0 t
	G 11 100 415	Steer wheel polyurethane with steel core, 2,3 t / 3,0 t, corrosion-protected
	G 11 000 390	Steer wheel nylon, 2,3 t / 3,0 t
	G 13 100 390	Steer wheel nylon, 2,3 t / 3,0 t, splash-proof bearings
	G 11 000 420	Steer wheel steel
L 022	G 63 000 330	Steer wheel shaft
	G 11 100 330	Steer wheel shaft, corrosion-protected
L 023	G 11 000 982	Circlip ring for steering roller shaft
	G 11 100 982	Circlip ring for steering roller shaft, corrosion-protected
L 024	G 11 000 350	Shim, steer wheel
	G 11 100 350	Shim, steer wheel, corrosion-protected
L 025	G 13 000 994	Tension pin for steering wheel shaft
	G 13 100 994	Tension pin for steering wheel shaft, corrosion-protected
L 026	G 11 000 440	Wheel cap, rubber, 2,3 t
L 027	G 63 010 132	Handle

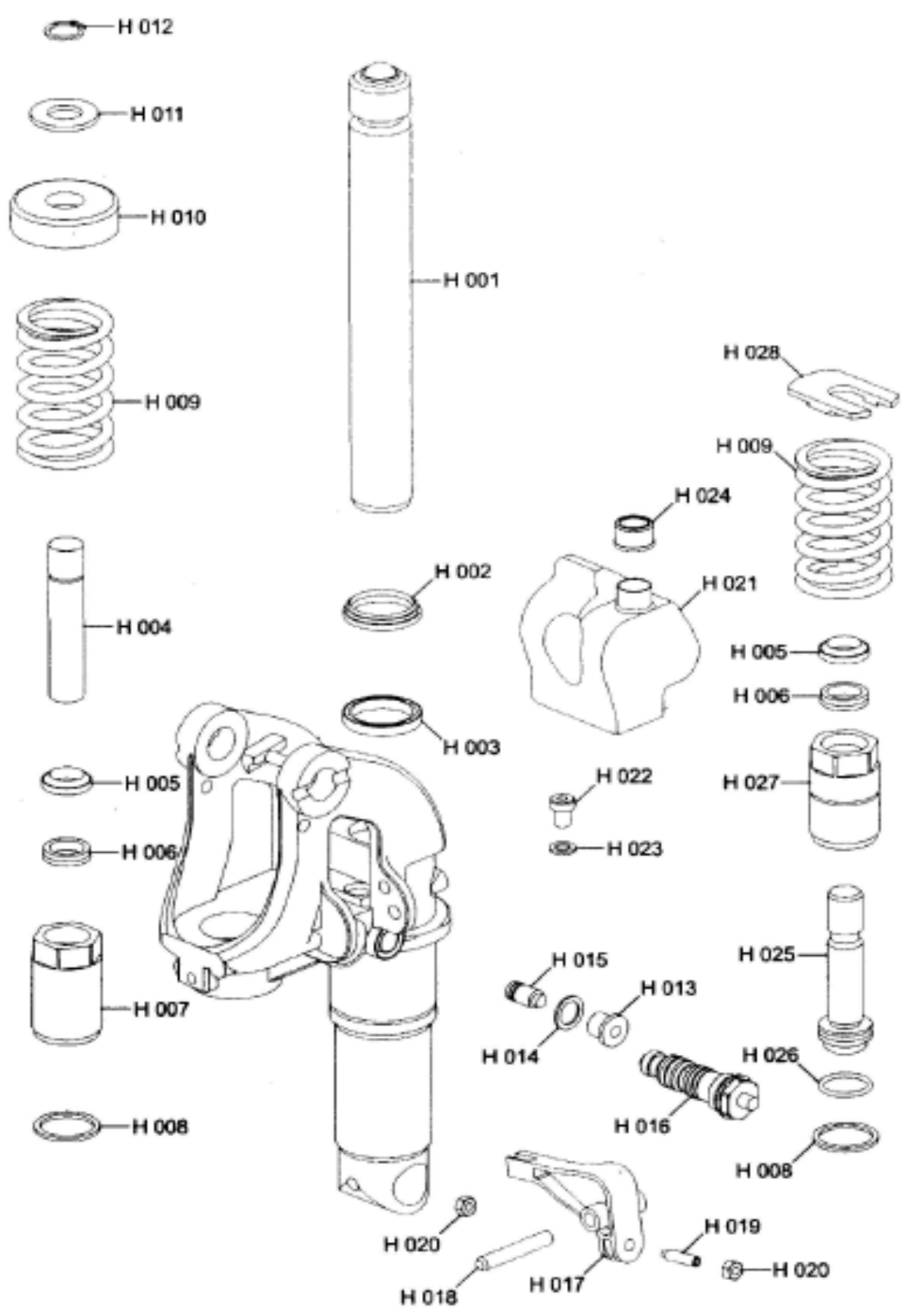
CHASSIS, EXPLOSIVE DRAWING



Chassis:

Fig. No.:	Order No.:	Designation:
F 001	171700000100	2x Screw
F 002	171700000200	2x Washer
F 003	171700000300	2x Nut
F 004	171700000400	1x Weighing Fork
F 005	171700000500	4x Washer
F 006	171700000600	2x Washer
F 007	171700000700	2x Screw
F 008	171700000800	1x Indicator Housing
F 009	171700000900	1x Bolt
F 010	171700001000	2x Lifting Assembly
no img.	171700001900	1x Ring
F 020	171700002000	2x Ring
F 021	171700002100	1x Axle
F 022	171700002200	1x Frame
F 023	171700002300	4x Ladcell
F 024	171700002400	8x Screw
F 025	171700002500	8x Washer
F 026	171700002600	2x Bolt
F 027	171700002700	2x Fork
F 028	171700002800	2x Ring
F 029	171700002900	2x Rod Assembly
F 030	17100003000	4x Nut
F 031	171700003100	16x Pin
F 032	171700003200	2x Bolt
no img.	171700003300	2x Ring
F 034	171700003400	4x Bolt
F 035	171700003500	2x Link Assembly
F 036	171700003600	2x Tandem wheel
F 037	171700003700	2x Single wheel
F 038	171700003800	2x Roller
F 039	171700003900	4x Washer
F 040	171700004000	2x Bush
F 041	171700004100	8x Lubrication nipple

HYDRAULICS, EXPLOSIVE DRAWING



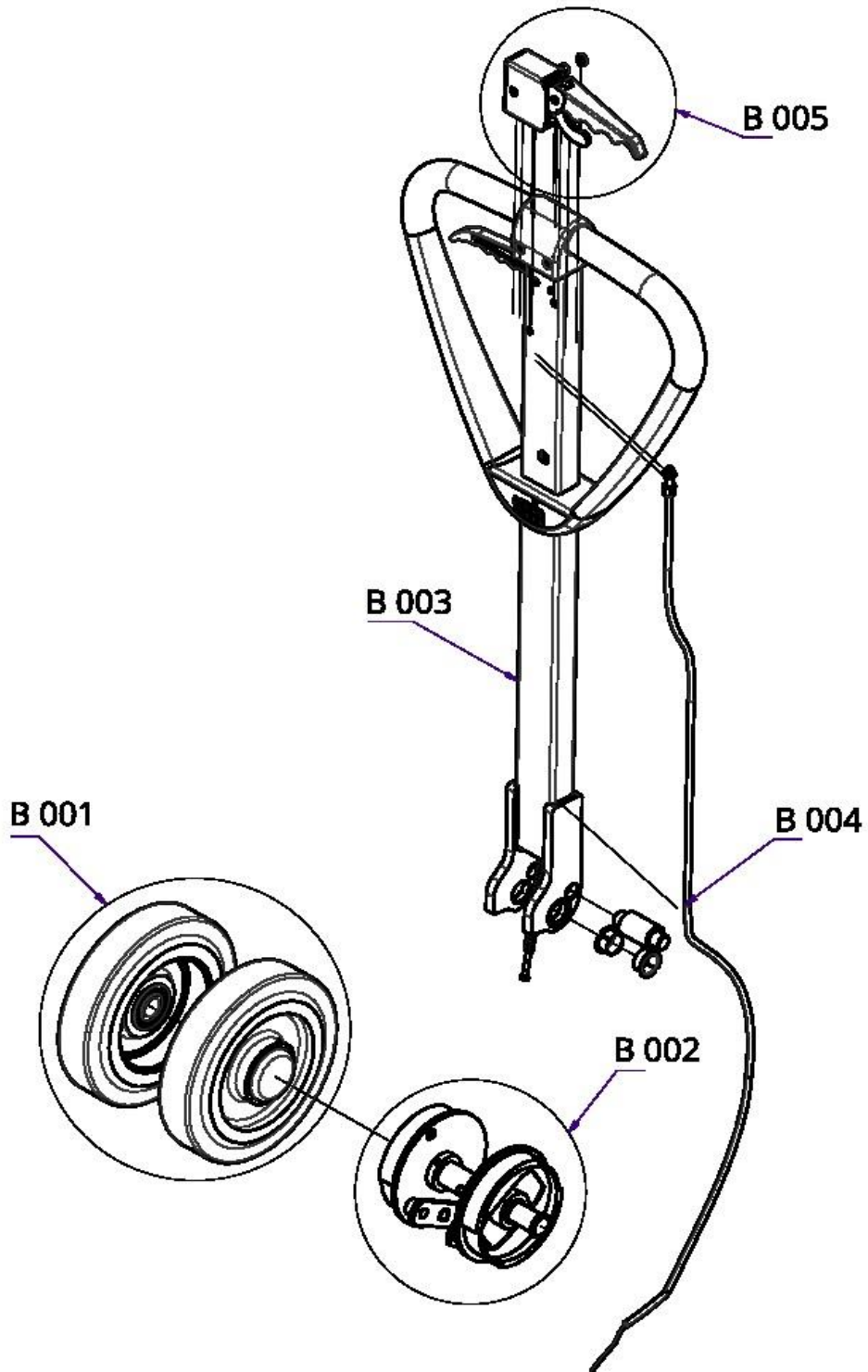
Hydraulics:		
Fig. No.:	Order No.:	Designation:
H 001	G 63 020 010	Lifting piston, 2,3 t / 3,0 t
H 002	G 63 020 120	Wiper seal, 2,0 t / 2,3 t / 3,0 t
H 003	G 03 020 030	Grooved ring, 2,0 t / 2,3 t / 3,0 t
H 004	G 63 020 190	Pump plunger, 2,3 t
	G 63 020 195	Pump plunger, 3,0 t
H 005	G 03 020 201	Wiper seal, 2,3 t
	G 03 020 215	Wiper seal, 3,0 t
H 006	G 03 020 203	Grooved ring, 2,3 t
	G 03 020 205	Grooved ring, 3,0 t
H 007	G 63 020 160	Screwed cylinder, standard, 2,3 t
	G 63 020 161	Screwed cylinder, standard, 3,0 t
H 008	G 63 020 162	Sealing ring
H 009	G 63 020 170	Compression spring – pump plunger, 2,3 t / 3,0 t
H 010	G 13 020 150	Protective sleeve, 2,3 t / 3,0 t
H 011	G 63 020 260	Shim, 2,3 t
	G 03 020 260	Shim, 3,0 t
H 012	G 63 020 250	Snap ring, 2,3 t
	G 03 020 250	Snap ring, 3,0 t
H 013	G 03 020 380	Screw plug, 2,3 t / 3,0 t
H 014	G 03 020 390	Sealing ring, 2,3 t / 3,0 t
H 015	G 63 020 320	Pressure control valve, 2,3 t
	G 03 020 322	Pressure control valve, 3,0 t
H 016	G 03 020 383	Valve cartridge, 2,3 t / 3,0 t
H 017	G 63 020 480	Lowering lever
H 018	G 13 000 998	Tension pin for lowering lever
H 019	G 01 020 491	Threaded pin, 2,3 t / 3,0 t
H 020	G 01 020 500	Hexagon nut, 2,3 t / 3,0 t
H 021	G 63 020 125	Tank
H 022	G 63 020 135	Tank fastening screw
H 023	G 63 020 136	Sealing ring fastening screw
H 024	G 63 020 130	Tank cap
H 025	G 63 028 180	Pump plunger, complete, quick-lift
H 026	G 63 028 181	Sealing ring for pump plunger, quick-lift
H 027	G 63 028 160	Screwed cylinder, quick-lift
H 028	G 63 028 150	Slotted pressure disk
*	G 63 020 600	Seal kit, 2,3 t
**	G 63 020 610	Seal kit, 3,0 t
***	G 63 028 600	Seal kit, quick-lift

* Contents gasket set G 63 020 600	** Contents gasket set G 63 020 610	*** Contents gasket set G 63 028 600
1 x G 03 020 030	1 x G 03 020 030	1 x G 03 020 030
1 x G 03 020 201	1 x G 03 020 205	1 x G 03 020 201
1 x G 03 020 203	1 x G 03 020 215	1 x G 03 020 203
1 x G 03 020 390	1 x G 03 020 390	1 x G 03 020 390
1 x G 63 020 120	1 x G 63 020 120	1 x G 63 020 120
1 x G 63 020 136	1 x G 63 020 136-001	1 x G 63 020 130
1 x G 63 020 162	1 x G 63 020 162	1 x G 63 020 136-001
		1 x G 63 020 162
		1 x G 63 028 181

Attention!

If you are replacing the H 021 tank, tighten the H 022 retaining bolt at a maximum torque of 6 Nm.

WHEEL- AND PARKING BRAKE, EXPLOSIVE DRAWING



Wheel- and parking brake:		
Fig. No.:	Order No.:	Designation:
B 001	G 23 007 360E	2x Front wheels for trolley with brake, Rubber
	G 13 007 405E	2x Front wheels for trolley with brake, Polyurethane
B 002	G 63 007 700E	Brake, set without wheels
B 003	G 63 007 031	Brake tiller handle, complete
B 004	G 13 007 750	Brake cable, complete
B 005	G 23 007 361	Brake lever

All items which are not listed are as used in the standard truck.

Status, January 2025. Rights Of Technical Changes and further development withheld.